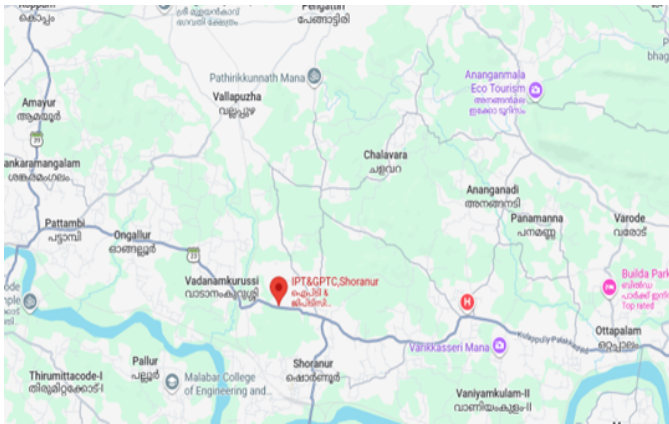
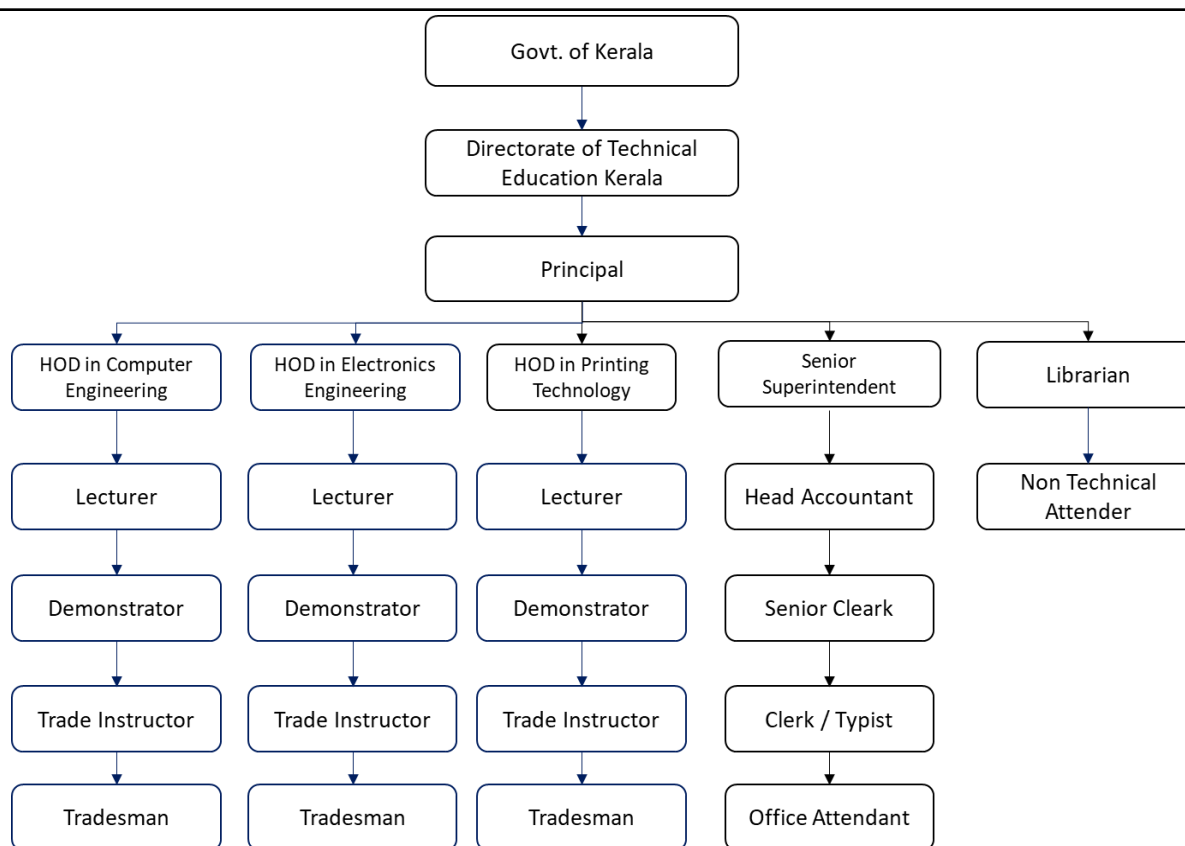


## MANDATORY DISCLOSURE

|   |  |  |
|---|--|--|
| 1 | AICTE Permanent Institute ID   | 1-474656361  |
| 2 | Name of the Institution  | Institute of Printing Technology & Government Polytechnic College Shoranur   |
|   | Address of the Institution   | Institute of Printing Technology & Government Polytechnic College, Govt. Press PO, Shoranur, Palakkad District, PIN: 679122, Kerala, India |
|   |  |    |
|   | City & Pin code  | Shoranur, 679122   |
|   | District   | Palakkad   |
|   | State  | Kerala   |
|   | Phone Number with STD Code   | 0466 2220450   |
|   | Fax Number with STD Code   |  |
|   | Office hours of the Institution  | Monday to Saturday 9.00AM to 4.00 PM   |
|   | Academic hours of the Institution  | Monday to Friday 9.00 AM to 4:00PM   |
|   | Email  | polyshoranur@gmail.com   |
|   | Website  | <a href="https://iptgptc.ac.in">https://iptgptc.ac.in</a>  |
|   | Nearest Railway Station (dist in Km)                                       | Shoranur Railway Station – 5 KM  |
|   | Nearest Airport (dist in Km)   | Cochin, 85 kms   |
|   | AICTE Permanent Institute ID   | 1-474656361  |
|   | AISHE CODE   | S-1511   |
| 3 | Type of Institution  | Government   |
|   | Category (1) of the Institution Non Minority / Minority specify minority : | NA   |
| 4 | Name of the Organization running the Institution                           | Directorate of Technical Education   |
|   | Type of the Organization   | Government   |
|   | Address of the Organization  | Padmavilasam Street, Fort P.O, Trivandrum, Kerala.   |
|   | Website of the Organization  | <a href="http://www.dtekerala.gov.in">www.dtekerala.gov.in</a>   |
| 5 | Name of Principal  | Mrs. Asha G Nair   |
|   | Exact Designation  | Principal  |
|   | Phone Number with STD code   | 9400006447   |
|   | Email  | <a href="mailto:principal@iptgptc.ac.in">principal@iptgptc.ac.in</a> , <a href="mailto:polyshoranur@gmail.com">polyshoranur@gmail.com</a>  |
|   | Highest Degree   | ME   |
|   | Field of specialization  | Computer Engineering   |

## 6. Organizational Chart



|   |  |  |
|---|--|--|
| 7 | Grievance redressal mechanism for faculty, staff and students                | The details of grievance redressal committee is available in <a href="http://iptgptc.ac.in/student_grievance_cell.html">http://iptgptc.ac.in/student_grievance_cell.html</a> |
|   | Anti-Ragging committee   | Details are available in <a href="http://iptgptc.ac.in/Docs/aicte/ar.pdf">http://iptgptc.ac.in/Docs/aicte/ar.pdf</a>   |
|   | SC & ST committee  | Details are available in <a href="http://iptgptc.ac.in/Docs/aicte/scst.pdf">http://iptgptc.ac.in/Docs/aicte/scst.pdf</a>   |
|   | Internal Quality Assurance Cell  | Details are available in <a href="http://iptgptc.ac.in/Docs/aicte/iqac.pdf">http://iptgptc.ac.in/Docs/aicte/iqac.pdf</a>   |
|   | Internal Complaints Committee (ICC) / Sexual Harassment Prevention Committee | Details are available in <a href="http://iptgptc.ac.in/Docs/aicte/ic.pdf">http://iptgptc.ac.in/Docs/aicte/ic.pdf</a>   |
| 8 | Name of the Department   | Department of Computer Engineering<br>Department of Electronics Engineering<br>Department of Printing Technology   |
|   | Courses  | Diploma in Computer Engineering<br>Diploma in Electronics Engineering<br>Diploma in Printing Technology  |
|   | Level  | Diploma  |
|   | Name of Programme Accredited by NBA  | NIL  |

|    |                                     |   |           |           |
|----|-------------------------------------|---|-----------|-----------|
|    | Accreditation Status of the course  | Accreditation period:<br>N A  |           |           |
|    | 1st Year of approval by the Council |   |           |           |
|    | <b>Year wise Sanctioned Intake</b>  | CAY<br>*  | CAY-<br>1 | CAY-<br>2 |
|    | Computer Engineering                | 60  | 60        | 60        |
|    | Electronics Engineering             | 60  | 60        | 60        |
|    | Printing Technology                 | 120   | 120       | 120       |
|    | <b>Year wise Actual Admissions</b>  | 2025-26   | 2024-25   | 2023-24   |
|    | Computer Engineering                | 60  | 60        | 60        |
|    | Electronics Engineering             | 60  | 60        | 60        |
|    | Printing Technology                 | 120   | 120       | 120       |
|    | <b>Students Placed</b>              |   |           |           |
|    | Computer Engineering                | 28  | 5         | 20        |
|    | Electronics Engineering             | 62  | 35        | 39        |
|    | Printing Technology                 | 57  | 68        | 43        |
| 9  | Name of Teaching Staff              | Details are available in<br><a href="https://iptgptc.ac.in/staff-ct.html">https://iptgptc.ac.in/staff-ct.html</a><br><a href="http://iptgptc.ac.in/staff-el.html">http://iptgptc.ac.in/staff-el.html</a><br><a href="http://iptgptc.ac.in/staff-pt.html">http://iptgptc.ac.in/staff-pt.html</a> |           |           |
| 10 | Admission quota                     | Details are available in<br><a href="http://www.polyadmission.org">www.polyadmission.org</a>  |           |           |
|    | Entrance test / admission criteria  | Statewise Rank list based on<br>SSLC/CBSE/ICSE (Marks for<br>Mathematics, Physics & Chemistry)<br><a href="http://www.polyadmission.org">www.polyadmission.org</a>  |           |           |
| 11 | Fees in rupees                      |   |           |           |
|    | Admission Fee                       | 275   |           |           |
|    | Tution Fee                          | 1015 x 2 = 2030   |           |           |
|    | Special Fees                        | 955   |           |           |
|    | Students Amenity                    | 350   |           |           |
|    | Caution Deposit                     | 1000  |           |           |
| 12 | <b>Infrastructural information</b>  |   |           |           |
|    | Classroom/Tutorial Room facilities  | Yes   |           |           |
|    | Laboratory details                  | Yes   |           |           |
|    | Computer Centre facilities          | Yes   |           |           |
|    | Library facilities                  | Yes   |           |           |
|    | Auditorium/Seminar Halls            | Yes   |           |           |
|    | Cafeteria                           | Yes   |           |           |
|    | Indoor Sports facilities            | Yes   |           |           |
|    | Outdoor Sports facilities           | Yes   |           |           |

|    |   |   |
|----|---|---|
|    | Gymnasium facilities  | Yes   |
|    | Girls Hostel  | Yes   |
|    | Medical & other Facilities at Hostel  | Yes   |
| 13 | <b>MoUs with Industries</b>   |   |
|    | M/s Nila Paper Products<br>Ongallur, Kondurkkara PO, Karakkad, Palakkad, Kerala-679313                                |   |
|    | M/S Karuna Offset Press<br>Main Road Pattambi, Palakkad, Kerala - 679303  |   |
|    | M/s. Prominent -A perfect Solution<br>4/354-A,4/354-A1,Gandhi Rd,Beach, Kozhikkod<br>Kerala 673032                    |   |
|    | EPixel Solutions Pvt Ltd,<br>15/159, GKR Smruthi, Krishna Kanandhi road<br>Near Govt Victoria College Palakkad 678001 |   |
|    | Verdant Power Solutions LLP<br>65/1835,Maitri,Shenoy Road, Kaloor,Ernamkulam-682017                                   |   |
|    | Regional Telecom Training Center, BSNL<br>Kanyakumari Road Near Kaimanam, Thiruvananthapuram-695040                   |   |
|    | M/s Britco & Bridco<br>NH Changuvetty, Kottakkal, Kerala-676501   |   |
| 14 | EoA till the current Academic Year  |   |
|    | 2025-26   | <a href="http://iptgptc.ac.in/Docs/aicte/ea2526.pdf">http://iptgptc.ac.in/Docs/aicte/ea2526.pdf</a> |
|    | 2024-25   | <a href="http://iptgptc.ac.in/Docs/aicte/ea2425.pdf">http://iptgptc.ac.in/Docs/aicte/ea2425.pdf</a> |
|    | 2023-24   | <a href="http://iptgptc.ac.in/Docs/aicte/ea2324.pdf">http://iptgptc.ac.in/Docs/aicte/ea2324.pdf</a> |
|    | 2022-23   | <a href="http://iptgptc.ac.in/Docs/aicte/ea2223.pdf">http://iptgptc.ac.in/Docs/aicte/ea2223.pdf</a> |
|    | 2021-22   | <a href="http://iptgptc.ac.in/Docs/aicte/ea2122.pdf">http://iptgptc.ac.in/Docs/aicte/ea2122.pdf</a> |
|    | 2020-21   | <a href="http://iptgptc.ac.in/Docs/aicte/ea2021.pdf">http://iptgptc.ac.in/Docs/aicte/ea2021.pdf</a> |